

Future of Medical Education in Canada (FMEC) CPD

- Recommendation report

Team based care small group learning sessions

- In collaboration with Practice Support Program & BCCFP

Integrating Primary Care CPD Project

- In collaboration with the Ministry of Health & UBC CPD

Customized Workshops

- In collaboration with Health Authorities, etc.

IPC on the Run

- Online module series
- Licensing options

Integrated Curricula

- iEthics
- eHealth
- Indigenous Cultural Safety
- Professionalism
- Resiliency
- Conflict Management

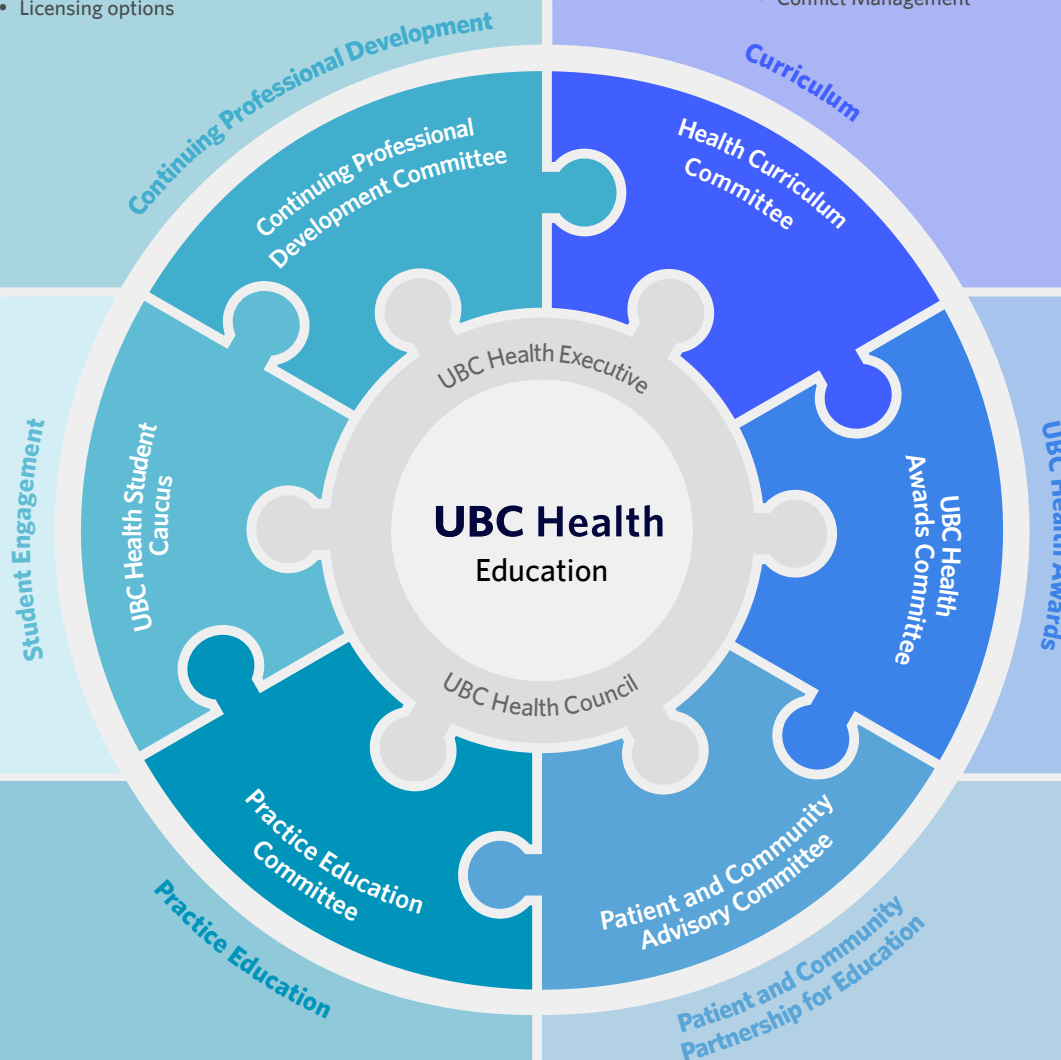
Logistical Supports

- IPE Passport (LMS)
- Protected Time
- eLearning Site (Moodle)

IPE Passport Activities

- Enriched or extracurricular interprofessional learning opportunities

Forum for health and human service student leaders to discuss common education issues, provide feedback on the development, implementation and evaluation of interprofessional learning opportunities, and contribute to the advancement of Interprofessional Education (IPE) at UBC



Pre-Placement Training

- HSPnet Interface
- Clinical Systems Transformation
- Face to Face Violence Prevention

Placements

- Practice Education Portal
- UBC Health Collaborative Practice Activities for the Practice Setting
- HSPnet Processes
- Guidelines

Community Health Initiatives by University Students (CHIUS)

- Vancouver Native Health Society
- Wish Drop-in Centre Society
- Three Bridges Student Clinic
- Positive Living Society of BC

Patient Recruitment and Facilitation

- Build and maintain relationships with community partners
- Assist and advise programs and committees with patient engagement

Awards Administration and Adjudication

- Scholarships for UBC Students
- Awards for UBC faculty members
- Awards for external health educators, professionals and community partners

Research-based Innovation

- Develop and test new opportunities to learn from patients and community
- Outcome research and scholarship

Patient Engagement

- Health Mentors Programs
- Patient Voices Workshops
- Community as Teacher Cultural Camps

Framework for Patient Engagement in Education

- Needs assessment